

Electrolube® ER2223

Epoxy Resin

DESCRIPTION

Electrolube® ER2223 is a two-part, high Tg, low viscosity epoxy encapsulation resin which has primarily been developed for encapsulation of electrical components that require high temperature resistance.

READ ENTIRE TECHNICAL DATA SHEET BEFORE USING THIS PRODUCT

FEATURES AND BENEFITS

- Low viscosity; aids ease of potting difficult and complex geometries
- Good chemical resistance; offers good protection in a range of environments
- Excellent adhesion to a wide range of substrates
- Wide operating temperature range; excellent high temperature performance

PRODUCT INFORMATION

Please contact your customer service representative for information on available package sizes.

PHYSICAL PROPERTIES

Category	Results
Liquid Properties	
Base Material	Epoxy
Color	Black
Part A - Resin	Colorless to light brown
Part B - Hardener	
Density	
Part A - Resin (g/mL)	1.15
Part B - Hardener (g/mL)	0.96

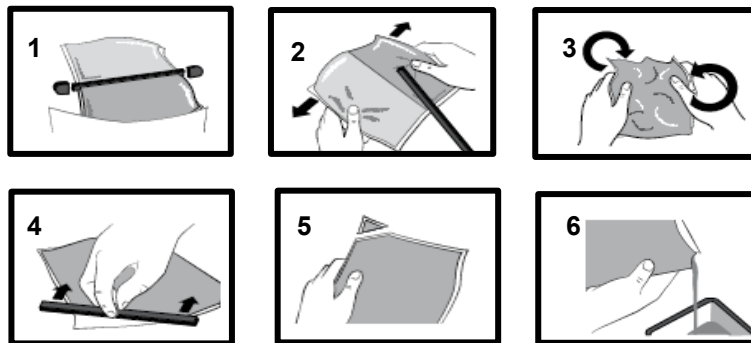
Category	Results
Viscosity (mPa s 23 °C) Part A Part B Mixed System	4000 50 800
Mix Ratio Weight Volume	3.45:1 2.90:1
Usable Life (20 °C)	130 minutes
Gel Time (23 °C)	145 minutes
Cure Time 23 °C 60 °C 100 °C	24 hours 4 hours 1 hour
Storage Conditions	Dry Conditions: Above 15 °C, Below 35 °C
Shelf Life	12 Months
Shrinkage	<1.0%
Cured System	
Color (Mixed System)	Black
Cured Density (g/mL)	1.10
Temperature Range (°C)	-40 to 180
Max Temperature Range (Short Term (°C)/30 Mins) (Application and Geometry Dependent)	210
Volume Resistivity (ohm-cm)	10 ¹⁵
Dielectric Strength (kV/mm)	12
Shore Hardness 25 °C 60 °C 100 °C	D80 D80 D75
Flame Retardancy	No

Category	Results
Coefficient of Expansion (ppm)	70
Loss Tangent @ 50 Hz	0.05
Permittivity @ 50 Hz	6.00
Comparative Tracking Index	>850 Volts
Water Absorption 10 days @ 20 °C / 1 hour @ 100 °C	< 0.25%
Glass Transition Temperature (°C)	140

APPLICATION GUIDELINES – RESIN PACKS

Mixing Procedures

When in Resin pack form, the resin and hardener are mixed by removing the clip and moving the contents around inside the pack until thoroughly mixed. To remove the clip, remove both end caps, grip each end of the pack and pull apart gently. By using the removed clip, take special care to push unmixed material from the corners of the pack. Mixing normally takes from three to four minutes depending on the skill of the operator and the size of the pack. Both the resin and hardener are evacuated prior to packing so the system is ready for use immediately after mixing. The corner may be cut from the pack so that it may be used as a simple dispenser. There is also a YouTube video ([Epoxy Mixing Instructions](#)) available on the Electrolube channel to show the mixing process.



APPLICATION GUIDELINES - BULK

Bulk Mixing

When mixing, care must be taken to avoid the introduction of excessive amounts of air. Automatic mixing equipment is available which will not only mix both the resin and hardener accurately in the correct ratio but do this without introducing air. Containers of Part A (Resin) and Part B (Hardener) should be kept sealed at all times when not in use to prevent the ingress of moisture. Bulk material must be thoroughly mixed before use. Incomplete mixing or use of the wrong mix ratio will result in erratic or partial curing.

ADDITIONAL INFORMATION

- Cleaning:** It is far easier for machines & containers to be cleaned before the resin has been allowed to cure. RRS is suitable for cleaning machines and containers and cured resin may be slowly softened and removed by soaking in our RRS.
- Curing:** Do not heat cure large volumes immediately. Allow these to gel at room temperature and post-cure at high temperature if required (refer to liquid properties for details). Small volumes (250 mL) may be heat cured immediately.
- Storage:** When storing under very cold conditions, the hardener may crystallise. If this occurs, simply warm (60 °C) the container gently until all crystals have re-melted. Resin packs must be kept flat during heating.

SAFETY & WARNING

It is recommended that the company/operator read and review the Safety Data Sheets for the appropriate health and safety warnings before use. **Safety Data Sheets are available.**

CONTACT INFORMATION

www.macdermidalpha.com

<p>North America 140 Centennial Avenue Piscataway, NJ 08854 1.800.367.5460</p>	<p>Europe Ashby Park Coalfield Way Ashby de la Zouch Leicestershire, LE65 1JR, UK 44.01530.41960</p>	<p>Asia 8/F., Two Sky Parc 51 Hung To Road Kwun Tong, Kowloon, Hong Kong, SAR China 852.2500.5365</p>
---	---	--

Also read carefully warning and safety information on the Safety Data Sheet. This data sheet contains technical information required for safe and economical operation of this product. READ IT THOROUGHLY PRIOR TO PRODUCT USE . Emergency safety directory assistance: US 1 202 464 2554, Europe + 44 1235 239 670, Asia + 65 3158 1074, Brazil 0800 707 7022 and 0800 172 020, Mexico 01800 002 1400 and (55) 5559 1588

DISCLAIMER: All statements, technical information and recommendations contained herein are based on tests we believe to be reliable, but the accuracy or completeness thereof is not guaranteed. No statement or recommendation shall constitute a representation unless set forth in an agreement signed by officers of seller and manufacturer. NO WARRANTY OF MERCHANTABILITY, WARRANTY OF FITNESS FOR A PARTICULAR PURPOSE OR ANY IMPLIED WARRANTY IS MADE. The following warranty is made in lieu of such warranties and all other warranties, express, implied, or statutory. Products are warranted to be free from defects in material and workmanship at the time sold. The sole obligation of seller and manufacturer under this warranty shall be to replace any noncompliant product at the time sold. Under no circumstances shall manufacturer or seller be liable for any loss, damage or expense, direct, indirect, incidental or consequential, arising out of the inability to use the product. Notwithstanding the foregoing, if products are supplied in response to a customer request that specifies operating parameters beyond those stated above, or if products are used under conditions exceeding said parameters, the customer by acceptance or use thereof assumes all risk of product failure and of all direct, indirect, incidental and consequential damages that may result from use of the products under such conditions, and agrees to exonerate, indemnify, defend and hold harmless MacDermid, Incorporated and its affiliates therefrom. No suggestion for product use nor anything contained herein shall be construed as a recommendation to use any product in a manner that infringes any patent or other intellectual property rights, and seller and manufacturer assume no responsibility or liability for any such infringement.

© 2019 MacDermid, Inc. and its group of companies. All rights reserved. "(R)" and "TM" are registered trademarks or trademarks of MacDermid, Inc. and its group of companies in the United States and/or other countries.